

Packaging Specifications

Product size	Package size	Quantity per carton	Weight
85mm * 85mm * 52mm	100mm * 100mm * 70mm	1	123g/carton

Operating Guide

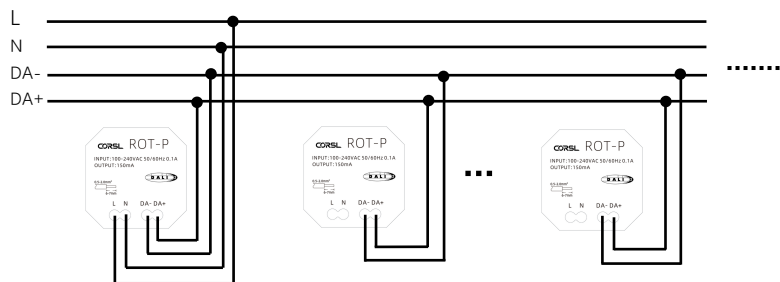
- As a **Standard Input Device** - The device's factory default setting is 'input device' mode, it can be addressed and configuration by higher-level central control units (support IEC 62386-103) on the DALI BUS.
- As an **Application Controller** - With the help of DALI-Config software and DMUmini, address the device first and activate the device to 'application controller' mode, then configuration or location.
- Please refer to the user manual.

Product Features

- according to IEC62386-101, IEC62386-102, IEC62386-103, IEC62386-301, IEC62386-302 Ed2.
- compatible with the mainstream DALI systems on the market.
- Screw connectors.
- installed in a flush-mounted installation box or on a cavity wall.
- waterproof Rating: IP20.

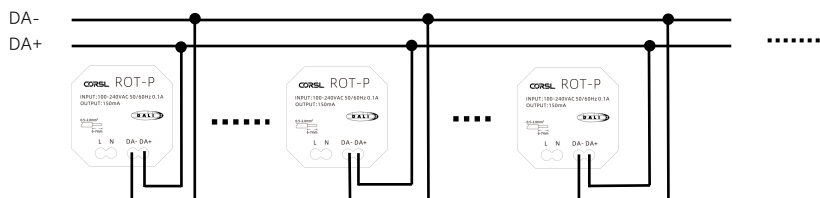
Wiring Diagram

> DALI Bus Power supplied by ROT-P



Note: Only one DALI bus power can supply on one DALI-line.

> ROT-P module is connected and supplied directly by the DALI-line

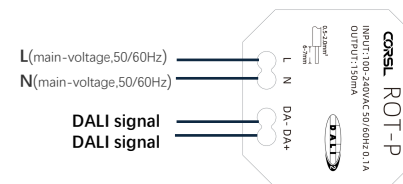


Function Introduction

- two ports are connected in parallel



- terminals



connection type	screw connector
wire size solid core	0,5 ... 2,0 mm ² (21 ... 14AWG)
wire size fine core	0,5 ... 2,0 mm ² (21 ... 14AWG)
wire size using wire end ferrule	0,3 ... 1,5 mm ²
stripping length	6 ~ 7mm

Product Parameters

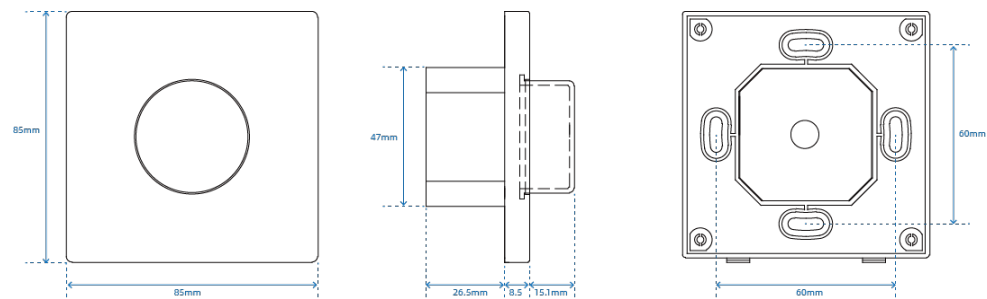
active operation(connect L, N to the AC mains; connect DA+,DA- to DALI-line)

input type	supply, main-voltage, 50/60Hz, 100mA
markings	L, N
input voltage range	100~240Vac, 50Hz / 60Hz
max. input supply current	100mA
output	DA+, DA-
output type	DALI

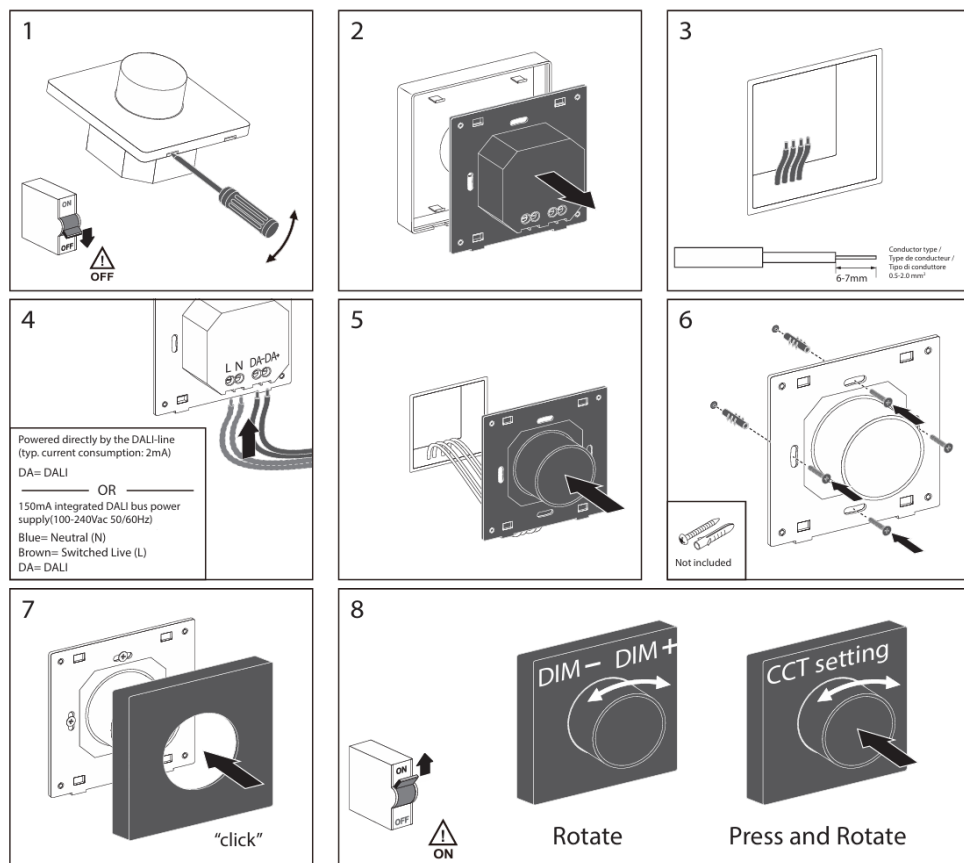
passive operation(inactive 'L' and 'N'; only connect DA+,DA- to DALI-line)

input voltage range	9,5V ... 22,5Vdc according to IEC62386
typ. current consumption DALI (at 16.5V)	2mA
Max. current consumption DALI (Inrush current at 22.5 V)	8mA

Dimensions



Installation Diagram



Warnings

- Installation may only be carried out in a voltage-free state of the system and by personnel with professional qualifications.
- National regulations for setting up electrical systems must be followed.
- The wiring should be carried out as a permanent installation in a dry and clean environment.
- This product is not waterproof. Please do not expose it to a damp environment.
- Please disconnect the mains power supply before wiring.
- Make sure the wiring is firm.
- Before power-on debugging, it should be ensured that all wiring is correct.
- In case of malfunction, Please do not repair it privately. If you have any questions, please contact the supplier.

Five-year warranty

1. Purchasing LED controller products of CROSL entitles you to lifetime technical support and warranty service.

- Free warranty: Within five years from the date of purchase, CROSL will provide free repair or replacement services for any product quality issues.
- Paid warranty: For products beyond the free warranty period, an appropriate cost of repair materials will be charged.

2. The following situations are not covered by the free warranty or replacement service

- Damages caused by human factors such as excessive voltage, overloading, and improper operation.
- The product's appearance is severely damaged or deformed.
- Damage caused by natural disasters and force majeure.
- The product has been updated and replaced.